

Solutions from tooth to root.

Natural tooth

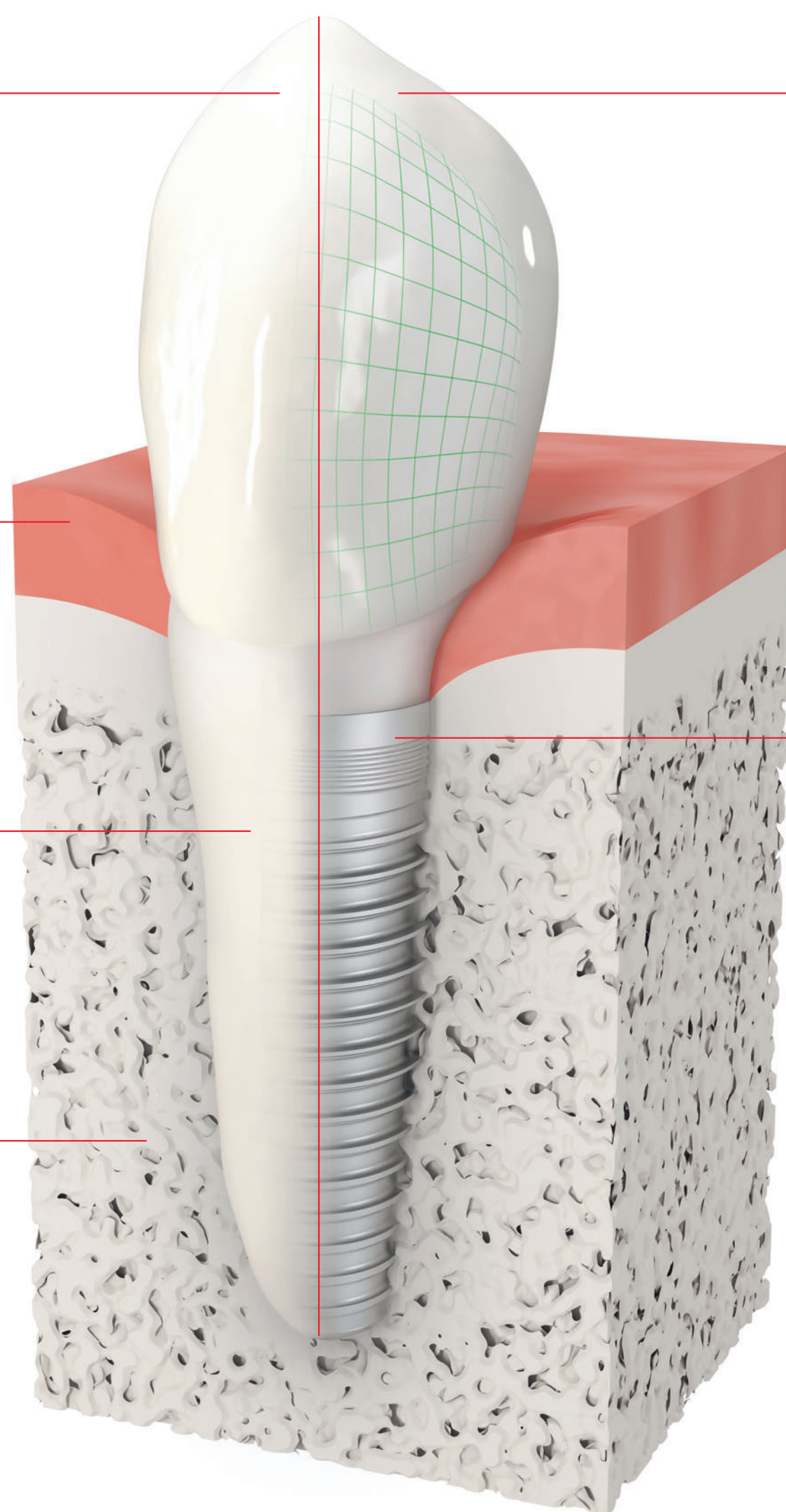
Crown on implant

Natural crown

Soft tissue (gum)

Tooth root

Jawbone



Individualized crown

Our prosthetic solutions are made of biocompatible materials, and are tissue-friendly. The gum is encouraged to grow back up to the tooth, as it would naturally. Our modern dental technology offers replacement teeth or repaired crowns which closely match the appearance and function of your natural healthy teeth.

Dental implant

Our implants are made of biocompatible titanium. They replace your natural tooth root, supporting the prosthetic restoration. Our implants are documented to enhance biological bonding with the bone (osseointegration), hence increasing the predictability of implant treatment.

Single-unit restorations



Restoring a damaged tooth: crown on an existing tooth.

Multiple-unit restorations



Bridge on existing teeth.

Full-arch restorations



Removable denture with attachment system on implants.



Fixed denture screwed directly on implants.



Replacing a missing tooth: crown on implant.



Bridge on implants.



Removable denture with attachment system on implant bar.



Fixed denture screwed on multi-unit abutments.